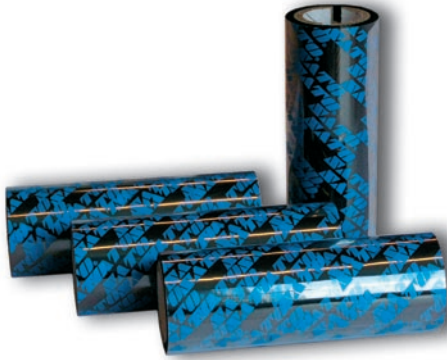




DCS & Labelling Worldwide



SATO New Standard Carbon Ribbon



With SATO's new Certified Standard Carbon Ribbon you make an impact!

The top of the line carbon ribbon in the thermal transfer wax category provides you with the maximum print performance. The right carbon ribbon combined with your SATO printer and the right type of media ensures clear and precise print quality. The SATO Standard provides unparalleled printhead protection, while delivering the darkest, most durable images. The ink formulation was developed in response to the technical requirements of SATO's thermal transfer printers equipped with proven flat head printheads.

Specific Features

- Delivers darker images
- Prints on a wider variety of substrates from uncoated papers to mid-range synthetic films
- Prints at high speeds (12 ips) delivering crisp, rotated barcodes
- Dissipates static
- Superior print quality on flood-coated labels
- Enhanced smudge and scratch resistance

Recommended Applications

Shipping labels, retail tags, food labels, pharmaceutical labels, ingredient labels, general ticketing, shelf labels, horticulture labels, warning labels, blood bags, drum labels, polybags and machinery part labels.



Shipping Labels

SATO carbon ribbons deliver crisp rotated barcodes on coated and uncoated tag and label stocks.



Food Labels

SATO carbon ribbon is suited for direct food contact and approved by ISEGA Certificate.



Pharmaceutical Labels

SATO carbon ribbons provide dark, durable images for critical applications.



Storage Labels

SATO carbon ribbons offer cost-effective solutions on a wide variety of substrates.

SATO Standard Carbon Ribbon

Ribbon Property

| Description | Specification | Measurement method |
|-----------------------------|---------------|--------------------|
| Ink Material | Enhanced wax | - |
| Total Thickness (µm) | 7.9 ± 0.5 | Micrometer |
| Base Film Thickness (µm) | 4.8 ± 0.4 | Micrometer |
| Ink Thickness (µm) | 2.8 ± 0.3 | Micrometer |
| Ribbon Transmission Density | ≥ 1.5 | Densitometer |
| Print Density | ≥ 1.7 | Densitometer |

Durability of Printed Image

| | |
|---|---|
| Labelstock: Coated paper | |
| Print Speed: 6 ips | Print Density: 1.79 |
| Smudge Resistance: ANSI A ¹ | Scratch Resistance: ANSI A ¹ |
| Test Equipment: Colorfastness Tester | |
| Conditions: Smudge Test: 25 cycles @ 500 grams with cotton cloth | |
| Scratch Test: 20 cycles @ 200 grams with stainless steel pointed tip | |
| ¹ Represents the American National Standards Institute (ANSI) Grade measured at the given conditions. Grade levels are A, B, C, D, and F, where A is excellent, B is above average, C is average, D is below average, and F is poor. | |

Recommended Applications

| |
|--|
| Shipping labels, retail tags, food labels, pharmaceutical labels, ingredient labels, general ticketing, shelf labels, horticulture labels, warning labels, blood bags, drum labels, polybags and machinery part labels |
|--|

Measured values may vary slightly when tested in a different environment.
Information contained within this document is subject to change without notification.