

DENSO

Member of the TOYOTA Group

Superior ID-Technology



Automatic Data Capture Solutions



BHT-300 Series

The New Standard in BHT Scanners

BHT-300 Series: Robust, flexible and with numerous features.

Whether you use wireless LAN, Bluetooth®, infrared or radio frequency for data transfer, Denso's new BHT-300 series is ideal for fast and simple inventory and stocktaking. Nor does it matter if you work with one or two-dimensional barcodes — the BHT-300 series has the right device for all your requirements.

Reading

High reading performance

- Scanning at ranges up to 450 mm (with narrow 1.2 mm bar width)
- Improved scanning of broader labels and badly printed or damaged bar codes

Viewing

Largest screen in its class

- Choose between a large, easy-to-read font size or a display of up to 9 lines with 22 characters each (12 point font)
- Alphanumeric characters, Kana and Kanji
- Compatibility mode with an 8-character, 4-line display for applications from earlier models (BHT-7000/-5000/-8000)
- The characters can be enlarged horizontally, vertically and simultaneously horizontally/vertically



Communication

Built-in wireless communication interface for connection to an existing LAN

- The BHT-300BW/BWB models are compatible with the global standard IEEE802.11b enabling wireless communication with up to 11 Mbit/s
- Security standards WPA/802.1x, WPA/PSK
- The BHT-300BB/BWB models are fitted with Bluetooth® — enabling wireless connection to portable printers

Performance and Quality

Functions for more flexibility

- Industry-leading impact resistance and superior operating environment features (the BHT-300 withstands being dropped onto concrete from a height of 1.20 m 30 times)
- Water and dust-resistance meet the IEC requirements of the International Standards Protection Class IP54 (equivalent to JIS splash proof)
- Power-saving design achieves longer operating time
- A lithium-ion battery and power-saving design extends continuous operating time and reduces costs by eliminating the need for replacement batteries as well as the inconvenience of managing battery recharging: up to 135 hours when reading two bar codes twice in 10 seconds and not using the wireless interface. 24 hours assuming a reading to wireless communication to display to standby mode ratio of 1:1:1:20 (BHT-300BW/BWB)
- CCD (Charged Coupled Device) technology: No moving parts, very robust

Extended scope of function

User-friendly Design

The angled scanner head and lightweight body improve user productivity — ideal for retail, logistics and warehousing applications.

Easy-to-use, highly durable key pad

Magic keys to which you can assign any functions you wish. Cursor key enhances

Technical Data

Memory (User area)		
Display	Resolutions	
	Display device	
	Character type	Alphanumeric Kana Kanji (standard) Kanji (small)
Scanner	Scanning systems	
	Scanning area	
	Scannable codes	2D-Codes Barcodes
	Resolution	
	Reading confirmation	
Keyboard		
Number of keys		
Communications	Optical interface	Standard Speed Range
	Wireless interface	Standard Frequency Range
		Modulation Speed
		Security Authentication
	Bluetooth®	
	Cable interface	
Power supply	Main power	
	Operating hours ⁽²⁾	
Auxiliary functions		
Environmental requirements	Operating temperature	
	Water/Dust proof	
	Shock resistant	
Weight		

(1): Narrow bar width: 1.2 mm or over, peripheral lighting min. 500

(2): When reading twice in a 10 seconds and not using the wireless

(3): Test value; not guaranteed



menu selection convenience.
Resin-coated keys enhance durability.

Extension Pack

The BHT-300 series is compatible with BHT-BASIC 4.0, which is now equipped with easy to use functions — it is compatible with earlier models and enables uncomplicated transfer of applications.

Vibrator

The vibrator reliably informs the user when the reading process has been completed and if any errors have occurred — even in noisy working environments.

Remote Wakeup Function

Makes it possible for it to be controlled from a PC and enables remote maintenance of master files, applications and operating systems.

BHT Extension Pack

BHT pack for creating applications

High performance development software for the whole process, from development to implementation. Easy installation, can be implemented immediately.

BHT-300

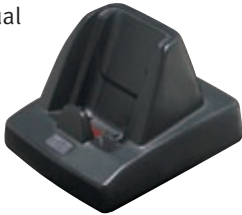
BHT-302B	BHT-303B	BHT-303BB	BHT-303BW	BHT-303BWB	BHT-304Q	BHT-304QW	BHT-304QB
5 MB (2.2 MB)	9 MB (5.8 MB)	9 MB (5.5 MB)	9 MB (5.25 MB)	9 MB (5 MB)	18 MB (12.5 MB)	18 MB (12 MB)	18 MB (12.25 MB)
132 x 72 dots							
Liquid crystal dot matrix display (Monochrome)							
9 lines x 22 characters							
4 lines x 8 characters							
6 lines x 11 characters							
Advanced Scanning (CCD) max. 450 mm ⁽¹⁾				Area Scanning max. 260 mm			
-				QR Code, Micro QR Code, PDF417, MicroPDF417, Maxi Code, DataMatrix, EAN.UCC Composite			
EAN-13/-8 (JAN-13/-8), UPC-A/-E, UPC/EAN with add-on codes, Interleaved 2 of 5, CODABAR (NW-7), CODE39, CODE93, CODE128 (EAN-128), Standard 2 of 5, MSI code				EAN-13/-8 (JAN-13/-8), UPC-A/-E, UPC/EAN with ad-on codes, Interleaved 2 of 5, CODABAR (NW-7), CODE39, CODE128 (EAN-128), MSI code, RSS			
0.15 mm				2D – 0.25 mm 1D – 0.15 mm			
2-color LED (red/green), buzzer, vibrator							
26 keys (incl. Power switch) + 2 trigger keys							
Infrared interface (IrDA-SIR 1.2 [Low Power] compliant)							
115.2 Kbit/s max.							
ca. 15 cm							
-	-	-	IEEE802.11b		-	IEEE802.11b	
-	-	-	2.4 GHz		-	2.4 GHz	
-	-	-	Indoors: ca. 75 m Outdoors: ca. 200 m		-	Indoors: ca. 75 m Outdoors: ca. 200 m	
-	-	-	DS-SS		-	DS-SS	
-	-	-	11/5.5/2.1 Mbit/s (with auto fallback)		-	11/5.5/2.1 Mbit/s (with auto fallback)	
-	-	-	WPA		-	WPA	
-	-	-	EAP-TLS, PEAP		-	EAP-TLS, PEAP	
-	-	Bluetooth® Ver. 1.2 Compliant Class 2		-	Bluetooth® Ver. 1.2 Compliant Class 2		-
Bluetooth® Ver. 1.2 Compliant Class 2							
RS232C (115.2 Kbit/s max.)							
Lithium-ion battery							
ca. 135 hours				ca. 48 hours			
Clock, beeper, vibrator, low battery indication, remote wake-up functions							
-5 °C ~ 50 °C							
IP54							
1.50 m (30 times onto floor) ⁽³⁾		1.20 m (30 times onto floor) ⁽³⁾					
ca. 230 g	ca. 240 g	ca. 250 g	ca. 260 g	ca. 235 g	ca. 255 g	ca. 255 g	ca. 245 g

Note

Carefully read the user manual before using the device. Specifications are subject to change without notice.
Information current as of January 2007.

Accessories

- Hand strap
- Lithium-ion battery BT-20L
- Operating manual

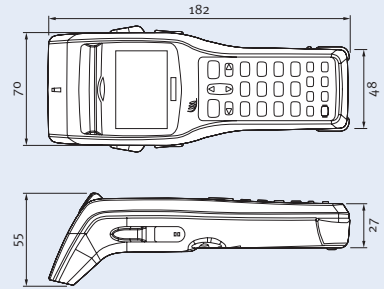


Optional Accessories (not supplied)

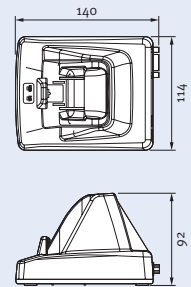
- Communication units:
 - CU-301 (RS-232C)
 - CU-321 (USB)
 - CU-311 (LAN) (available shortly)
- Battery charger for the main power supply battery (CH-351)
- Soft case and belt case (available shortly)

Dimensions (in mm)

BHT-300 Series



CU-300 Series



Technical Data CU-300

			CU-301	CU-321 ⁽¹⁾
Communication	BHT ← → CU (Communication unit)	Communication system	IrDA-SIR Ver. 1.2 (Low Power) compliant	
		Communication speed	115.2 Kbit/s max.	
	CU ← → Host	Communication system	RS-232C	USB 1.1 Full Speed (virtual Com Port)
Display	LEDs	Power, communication		
Battery charger	Charge time	4 hours	9 hours ⁽²⁾	
Power source		AC adapter	From connected device or AC adapter	

(1): Connection may not be possible depending on the type of PC or USB hub being used. First check if they are compatible. The AC/DC adapter (not included in the scope of delivery) is required for recharging or discharging the battery if no power supply is available via the connected device, such as when this is switched off or is in standby mode.

(2): Charge time may vary according to the power supplied by the connected device. Charge time with the AC/DC adapter is 4 hours.

Company Stamp